



DATA SHEET

Data Sheet number
11.23

Revision number
v.3

Revision date
18.11.2025

Product code
as listed in the table

FEMALE QUICK COUPLING WITH ULTRA HYGIENIC® ANTIMICROBIAL PROTECTION



INTERNAL
THREAD

EXTERNAL
THREAD



1/2"



3/8"



SAVE WATER



MATERIAL

Stainless Steel
Polypropylene, homopolymer and elastomer cover
Antimicrobial and detectable additives in quick coupling cover

COLOURS

Blue **B** Red **R** Yellow **Y** Green **G**
Detectable (dark blue) **DET**

MAX PRESSURE

400 bar

NUMBER OF PIECES IN THE PACKAGE

1 pc (foil) or 12 in multipack

PACKAGE DIMENSIONS (WxHxD)

135 x 60 x 175 mm



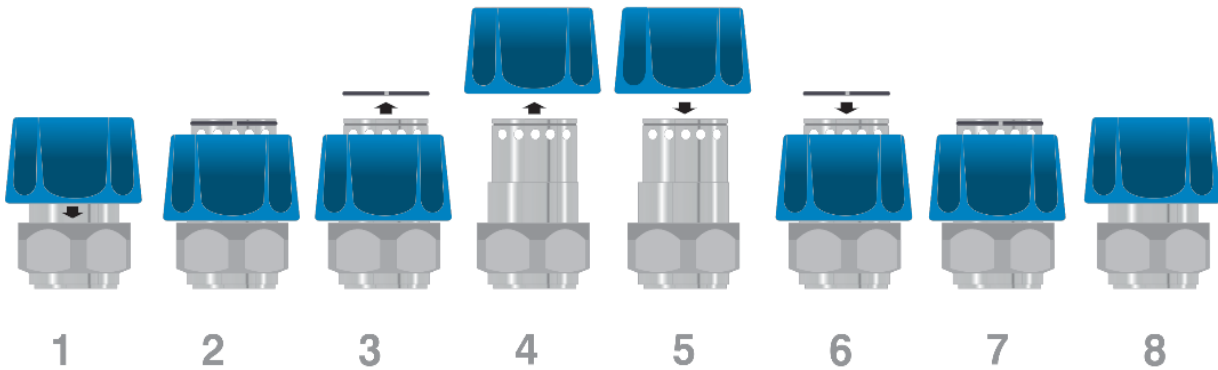


PRODUCT CODES

NAME/VERSION	PRODUCT CODE	THREAD	WEIGHT	NUMBER OF PIECES IN THE PACKAGE
Female quick coupling ULTRA HYGIENIC® Antimicrobial EXT Thread 1/2" with protection	03.02.21.12.X	EXT 1/2" FLAT	170 g	12
Female quick coupling ULTRA HYGIENIC® Antimicrobial INT Thread 1/2" with protection	03.02.22.12.X	INT 1/2" FLAT	153 g	12
Female quick coupling ULTRA HYGIENIC® Antimicrobial EXT Thread 1/2" with protection and cone sealing	03.02.21.16.X	EXT 1/2" CONE	167 g	12
Female quick coupling ULTRA HYGIENIC® Antimicrobial EXT Thread 3/8" with protection	03.02.21.38.X	EXT 3/8" FLAT	158 g	12
Female quick coupling ULTRA HYGIENIC® Antimicrobial INT Thread 3/8" with protection	03.02.12.38.X	INT 3/8" FLAT	161 g	12
Female quick coupling SAVE WATER ULTRA HYGIENIC® Antimicrobial EXT Thread 1/2" with protection	03.02.21.12.X.SW	EXT 1/2" FLAT	177 g	12
Female quick coupling SAVE WATER ULTRA HYGIENIC® Antimicrobial EXT Thread 3/8" with protection	03.02.21.38.X.SW	EXT 3/8" FLAT	209 g	1 (foli)

X — Colour of female quick coupling cover, e.g. B,R,Y,G,DET

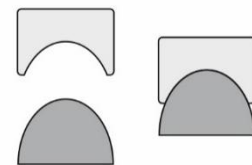
EXCHANGE/ASSEMBLY INSTRUCTION FOR THE FEMALE QUICK COUPLING COVER



SEALINGS



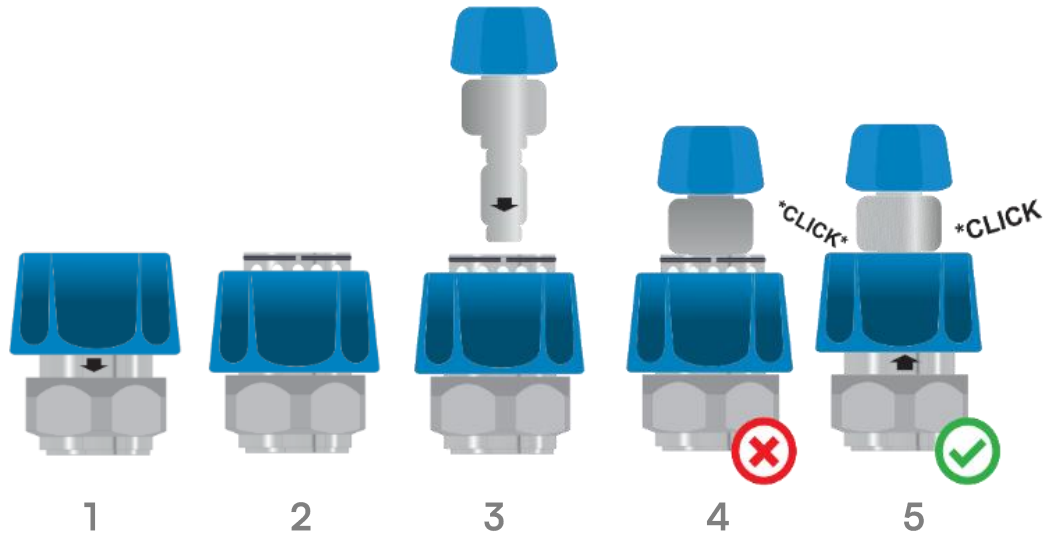
FLAT SEALING CONE SEALING



CONE SEALING



ASSEMBLY INSTRUCTION FOR CONNECTING THE LANCE TO THE QUICK COUPLING



To assemble the lance to the quick coupling, follow this steps:

STEP 1 — pull the cover of the quick coupling down (Picture 1&2);

STEP 2 — insert the lance into the quick coupling and push it until you feel resistance (Picture 3);

STEP 3 — push the quick coupling cover back, then release it so it returns to its original position (Picture 5).



ATTENTION! When the bearing balls are visible, **the quick coupling is not secured correctly** (Picture 4). Incorrect installation of this component may cause it to be ejected by water pressure. In case the lance has not fully been pushed in, move the quick coupling cover back to its original position until you hear a “click” (Picture 5).

Do not replace the lance while the water flow is open!

- Repeatably and precisely made thread in accordance with ISO standards.
- This product is compatible with male quick couplings from CleanAccess offer and most of male quick couplings used in Central Cleaning System.
- Quick coupling cover is made by overmoulding plastic onto stainless steel to prevent slipping.
- Cover of female quick coupling is available in 5 different colours which allows colour coding.
- All quick coupling covers contain antimicrobial additive.
- Quick coupling cover is also available in metal detectable version due to the addition of small metal particles.
- The shape of the quick coupling cover facilitates the use of quick coupling.
- The shape of the quick coupling cover facilitates the assembly of the female quick coupling to the male quick coupling and prevents from rolling on the surface.
- Easy and quick replacement of the cover.
- Female quick coupling repair kit is available with covers in 5 different colours which allows colour coding (including detectable by X-Ray and metal detectors version).
- In case of the flat sealing and teflon seal the use of glue or teflon tape are not required.
- For additional protection of the self - loosening of the thread, it is recommended to use thread glue which is available in CleanAccess offer.
- Teflon seals are not supplied with the quick coupling kit. They are available in CleanAccess offer as a separated product.
- There are 12 balls in the ring.



SAVE WATER ULTRA HYGIENIC® ANTYMICROBIAL FEMALE QUICK COUPLINGS

- The unique design of the SAVE WATER quick couplings enables almost complete water flow shut-off with the open water stream.
 - This solution helps to protect female quick couplings and seals and also eliminates improper rinsing practices through the quick coupling. Additionally, it limits unauthorized access to the cleaning point.
 - The use of the SAVE WATER quick coupling results in reducing water usage, amount of sewage and saving electricity (protects pump).
 - SAVE WATER female quick couplings must be used with the SAVE WATER lances only (or SAVE WATER male quick coupling). This will ensure correct operation of the set. Use of a standard male quick coupling or the lance will prevent full opening of water flow.
 - SAVE WATER lances may be used with standard, broadly available female quick couplings.
-