



DATA SHEET

Data Sheet number
20.23

Revision number
v.2

Revision date
15.12.2025

Product code
as listed in the table

ULTRA HYGIENIC® LANCES



MATERIAL		Stainless Steel, Polypropylene, homopolymer and elastomer nozzle cover, Antimicrobial and detectable additives in nozzle cover, POM handle cover
NOZZLE COVER COLOURS		Blue B Yellow Y Green G White W Detectable (dark blue) DET Stainless Steel
RECOMMENDED WORKING PRESSURE		3-30 bar
LENGTH 70 mm	WEIGHT	88 g
	NUMBER OF PIECES IN THE PACKAGE / SIZE PACKAGE	20 / 135 x 175 x 60 (W x D x H)
LENGTH 500 mm	WEIGHT	550 g
	NUMBER OF PIECES IN THE PACKAGE / SIZE PACKAGE	20 / 135 x 175 x 60 (W x D x H)
LENGTH 700 mm	WEIGHT	740 g
	NUMBER OF PIECES IN THE PACKAGE / SIZE PACKAGE	20 / 135 x 175 x 60 (W x D x H)



CLEANACCESS

FOOD HYGIENE EQUIPMENT



	PACKAGE / SIZE PACKAGE	
LENGTH 900 mm	WEIGHT	930 g
	NUMBER OF PIECES IN THE PACKAGE / SIZE PACKAGE	20 / 135 x 175 x 60 (W x D x H)
FOAMING LENGTH 70 mm	WEIGHT	148 g
	NUMBER OF PIECES IN THE PACKAGE / SIZE PACKAGE	20 / 135 x 175 x 60 (W x D x H)
FOAMING LENGTH 220 mm	WEIGHT	255 g
	NUMBER OF PIECES IN THE PACKAGE / SIZE PACKAGE	20 / 135 x 175 x 60 (W x D x H)



ULTRAHYGIENIC®
Safety FIRST



AVAILABLE TYPES OF LANCES

TYPE	CODE	NAME
Flat fan lances	04.07.25.30.X	ULTRA HYGIENIC® Antimicrobial flat fan lance 70 mm with 25/30 nozzle
	04.07.25.30.X.SW	SAVE WATER ULTRA HYGIENIC® Antimicrobial flat fan lance 70 mm with 25/30 nozzle
	04.07.15.20.Y	ULTRA HYGIENIC® Antimicrobial flat fan lance 70 mm with 15/20 nozzle — for disinfection
	04.07.15.20.Y.SW	SAVE WATER ULTRA HYGIENIC® Antimicrobial flat fan lance 70 mm with 15/20 nozzle — for disinfection
	04.07.25.40.X	ULTRA HYGIENIC® Antimicrobial flat fan lance 70 mm with 25/40 nozzle
	04.07.25.40.X.SW	SAVE WATER ULTRA HYGIENIC® Antimicrobial flat fan lance 70 mm with 25/40 nozzle
	04.07.40.30.X	ULTRA HYGIENIC® Antimicrobial flat fan lance 70 mm with 40/30 nozzle
	04.07.40.30.X.SW	SAVE WATER ULTRA HYGIENIC® Antimicrobial flat fan lance 70 mm with 40/30 nozzle
	04.07.15.25.Y	ULTRA HYGIENIC® Antimicrobial flat fan lance 70 mm with 15/25 nozzle — for disinfection
	04.07.15.25.Y.SW	SAVE WATER ULTRA HYGIENIC® Antimicrobial flat fan lance 70 mm with 15/25 nozzle — for disinfection
	04.07.15.30.Y	ULTRA HYGIENIC® Antimicrobial flat fan lance 70 mm with 15/30 nozzle — for disinfection
	04.07.15.30.Y.SW	SAVE WATER ULTRA HYGIENIC® Antimicrobial flat fan lance 70 mm with 15/30 nozzle — for disinfection
	04.07.15.40.Y	ULTRA HYGIENIC® Antimicrobial flat fan lance 70 mm with 15/40 nozzle — for disinfection
	04.07.15.40.Y.SW	SAVE WATER ULTRA HYGIENIC® Antimicrobial flat fan lance 70 mm with 15/40 nozzle — for disinfection
	04.50.25.30.X	ULTRA HYGIENIC® Antimicrobial flat fan lance 500 mm with 25/30 nozzle
	04.50.25.30.X.SW	SAVE WATER ULTRA HYGIENIC® Antimicrobial flat fan lance 500 mm with 25/30 nozzle
	04.50.25.30.AX	Angled ULTRA HYGIENIC® Antimicrobial flat fan lance 500 mm with 25/30 nozzle
	04.50.25.30.AX.SW	Angled SAVE WATER ULTRA HYGIENIC® Antimicrobial flat fan lance 500 mm with 25/30 nozzle
	04.50.25.40.X	ULTRA HYGIENIC® Antimicrobial flat fan lance 500 mm with 25/40 nozzle
	04.50.25.40.X.SW	SAVE WATER ULTRA HYGIENIC® Antimicrobial flat fan lance 500 mm with 25/40 nozzle
04.50.40.30.X	ULTRA HYGIENIC® Antimicrobial flat fan lance 500 mm with 40/30 nozzle	



CLEANACCESS

FOOD HYGIENE EQUIPMENT








	04.50.40.30.X.SW	SAVE WATER ULTRA HYGIENIC® Antimicrobial flat fan lance 500 mm with 40/30 nozzle
	04.70.25.30.X	ULTRA HYGIENIC® Antimicrobial flat fan lance 700 mm with 25/30 nozzle
	04.70.25.30.X.SW	SAVE WATER ULTRA HYGIENIC® Antimicrobial flat fan lance 700 mm with 25/30 nozzle
	04.90.25.30.X	ULTRA HYGIENIC® Antimicrobial flat fan lance 900 mm with 25/30 nozzle
	04.90.25.30.X.SW	SAVE WATER ULTRA HYGIENIC® Antimicrobial flat fan lance 900 mm with 25/30 nozzle
	04.50.15.20.Y	ULTRA HYGIENIC® Antimicrobial flat fan lance 500 mm with 15/20 nozzle — for disinfection
	04.50.15.20.Y.SW	SAVE WATER ULTRA HYGIENIC® Antimicrobial flat fan lance 500 mm with 15/20 nozzle — for disinfection
	04.50.15.25.Y	ULTRA HYGIENIC® Antimicrobial flat fan lance 500 mm with 15/25 nozzle — for disinfection
	04.50.15.25.Y.SW	SAVE WATER ULTRA HYGIENIC® Antimicrobial flat fan lance 500 mm with 15/25 nozzle — for disinfection
	04.50.15.30.Y	ULTRA HYGIENIC® Antimicrobial flat fan lance 500 mm with 15/30 nozzle — for disinfection
	04.50.15.30.Y.SW	SAVE WATER ULTRA HYGIENIC® Antimicrobial flat fan lance 500 mm with 15/30 nozzle — for disinfection
	04.50.15.40.Y	ULTRA HYGIENIC® Antimicrobial flat fan lance 500 mm with 15/40 nozzle — for disinfection
	04.50.15.40.Y.SW	SAVE WATER ULTRA HYGIENIC® Antimicrobial flat fan lance 500 mm with 15/40 nozzle — for disinfection
Solid fan lances	04.07.00.20.X	ULTRA HYGIENIC® Antimicrobial solid fan lance 70 mm with 00/20 nozzle
	04.07.00.20.X.SW	SAVE WATER ULTRA HYGIENIC® Antimicrobial solid fan lance 70 mm with 00/20 nozzle
	04.07.00.15.X	ULTRA HYGIENIC® Antimicrobial solid fan lance 70 mm with 00/15 nozzle
	04.07.00.15.X.SW	SAVE WATER ULTRA HYGIENIC® Antimicrobial solid fan lance 70 mm with 00/15 nozzle
	04.07.00.25.X	ULTRA HYGIENIC® Antimicrobial solid fan lance 70 mm with 00/25 nozzle
	04.07.00.25.X.SW	SAVE WATER ULTRA HYGIENIC® Antimicrobial solid fan lance 70 mm with 00/25 nozzle
	04.07.00.30.X	ULTRA HYGIENIC® Antimicrobial solid fan lance 70 mm with 00/30 nozzle
	04.07.00.30.X.SW	SAVE WATER ULTRA HYGIENIC® Antimicrobial solid fan lance 70 mm with 00/30 nozzle
	04.07.00.40.X	ULTRA HYGIENIC® Antimicrobial solid fan lance 70 mm with 00/40 nozzle
	04.07.00.40.X.SW	SAVE WATER ULTRA HYGIENIC® Antimicrobial solid fan lance 70 mm with 00/40 nozzle
	04.07.00.50.X	ULTRA HYGIENIC® Antimicrobial solid fan lance 70 mm with 00/50 nozzle
	04.07.00.50.X.SW	SAVE WATER ULTRA HYGIENIC® Antimicrobial solid fan lance 70 mm with 00/50 nozzle
	04.07.00.60.X	ULTRA HYGIENIC® Antimicrobial solid fan lance 70 mm with 00/60 nozzle
	04.07.00.60.X.SW	SAVE WATER ULTRA HYGIENIC® Antimicrobial solid fan lance 70 mm with 00/60 nozzle
	04.50.00.20.X	ULTRA HYGIENIC® Antimicrobial solid fan lance 500 mm with 00/20 nozzle
	04.50.00.20.X.SW	SAVE WATER ULTRA HYGIENIC® Antimicrobial solid fan lance 500 mm with 00/20 nozzle
	04.70.00.20.X	ULTRA HYGIENIC® Antimicrobial solid fan lance 700 mm with 00/20 nozzle
04.70.00.20.X.SW	SAVE WATER ULTRA HYGIENIC® Antimicrobial solid fan lance 700 mm with 00/20 nozzle	
Foaming lances	04.07.50.200.W	ULTRA HYGIENIC® foaming lance 70 mm with 50/200 nozzle
	04.07.50.200.W.SW	SAVE WATER ULTRA HYGIENIC® foaming lance 70 mm with 50/200 nozzle
	04.07.65.150.W	ULTRA HYGIENIC® foaming lance 70 mm with 65/150 nozzle
	04.07.65.150.W.SW	SAVE WATER ULTRA HYGIENIC® foaming lance 70 mm with 65/150 nozzle
	04.22.50.200.W	ULTRA HYGIENIC® foaming lance 220 mm with 50/200 nozzle
	04.22.50.200.W.SW	SAVE WATER ULTRA HYGIENIC® foaming lance 220 mm with 50/200 nozzle
	04.22.50.200.W.W	ULTRA HYGIENIC® foaming lance 220 mm with 50/200 nozzle — with a handle
	04.22.50.200.W.W.SW	SAVE WATER ULTRA HYGIENIC® foaming lance 220 mm with 50/200 nozzle — with a handle
	04.22.65.150.W	ULTRA HYGIENIC® foaming lance 220 mm with 65/150 nozzle
	04.22.65.150.W.SW	SAVE WATER ULTRA HYGIENIC® foaming lance 220 mm with 65/150 nozzle

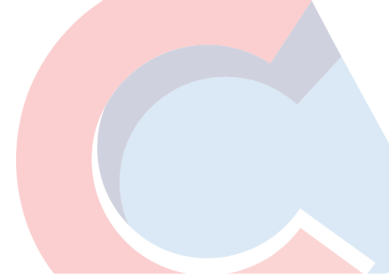


04.50.50.200.W	ULTRA HYGIENIC® foaming lance 500 mm with 50/200 nozzle
04.50.50.200.W.SW	SAVE WATER ULTRA HYGIENIC® foaming lance 500 mm with 50/200 nozzle
04.50.65.150.W	ULTRA HYGIENIC® foaming lance 500 mm with 65/150 nozzle
04.50.65.150.W.SW	SAVE WATER ULTRA HYGIENIC® foaming lance 500 mm with 65/150 nozzle
04.50.65.150.W.W	ULTRA HYGIENIC® foaming lance 500 mm with 65/150 nozzle — with a handle
04.50.65.150.W.W.SW	SAVE WATER ULTRA HYGIENIC® foaming lance 500 mm with 65/150 nozzle — with a handle

X — Colour of nozzle cover

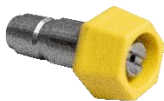
TYPES OF LANCES AND EXAPMLES

		RINSING		FOAMING
		FLAT	SOLID STREAM	
				
		COLOURS: B, G, Y, DET, SS Covers ¼" thread		COLOURS: W Cover ½" thread
 ANGLE/FLOW		15° / 20l/min 15° / 25 l/min 15° / 30 l/min 15° / 40 l/min 25° / 15 l/min 25° / 20 l/min 25° / 25 l/min 25° / 30 l/min 40° / 30 l/min	00° / 15 l/min 00° / 20 l/min 00° / 25 l/min 00° / 30 l/min 00° / 35 l/min 00° / 40 l/min 00° / 50 l/min 00° / 60 l/min	50° / 200 l/min 65° / 150 l/min
	 LENGTH		70 mm 500 mm 700 mm 900 mm	70 mm 500 mm 700 mm 900 mm



PRODUCT CODES			
PRODUCT GROUP	ANGLE /FLOW	TYPE OF NOZZLE PROTECTION	
	00°... - solid stream 15°- 40°... - flat 50°- 65°... foaming	DET metal detectable nozzle protection SS stainless steel nozzle protection B,G,Y rinsing nozzle colour protection W foaming nozzle colour protection	
<div style="display: flex; justify-content: space-around; align-items: center;"> <div style="text-align: center;">↑</div> <div style="text-align: center;">↑</div> <div style="text-align: center;">↑</div> <div style="text-align: center;">↑</div> </div> <div style="display: flex; justify-content: center; gap: 10px; margin: 10px 0;"> <div style="border: 1px solid gray; padding: 5px; font-weight: bold; font-size: 24px;">04</div> <div style="border: 1px solid gray; padding: 5px; font-weight: bold; font-size: 24px;">.XX</div> <div style="border: 1px solid gray; padding: 5px; font-weight: bold; font-size: 24px;">.XX</div> <div style="border: 1px solid gray; padding: 5px; font-weight: bold; font-size: 24px;">.XX</div> <div style="border: 1px solid gray; padding: 5px; font-weight: bold; font-size: 24px;">.X</div> <div style="border: 1px solid gray; padding: 5px; font-weight: bold; font-size: 24px;">.A</div> <div style="border: 1px solid gray; padding: 5px; font-weight: bold; font-size: 24px;">.XX</div> <div style="border: 1px solid gray; padding: 5px; font-weight: bold; font-size: 24px;">.SW</div> </div> <div style="display: flex; justify-content: center; align-items: center; gap: 10px;"> <div style="text-align: center;">↓</div> <div style="text-align: center;">↓</div> <div style="text-align: center;">↓</div> <div style="text-align: center;">↓</div> <div style="text-align: center;">↓</div> <div style="text-align: center;">↓</div> <div style="text-align: center;">↓</div> </div>			
	LENGTH 07 – 70 mm 22 – 220 mm 50 – 500 mm 70 – 700 mm 90 – 900 mm	DEGREE OF LANCE BENT Optional. In standard, A means angled 15° lance, if there is no other angle given in the last pair (after the colour). In the case of unangled lances, A is omitted.	SAVE WATER LANCE Optional. It is the code of SAVE WATER lance.

EXAMPLE



04.07.25.30.Y

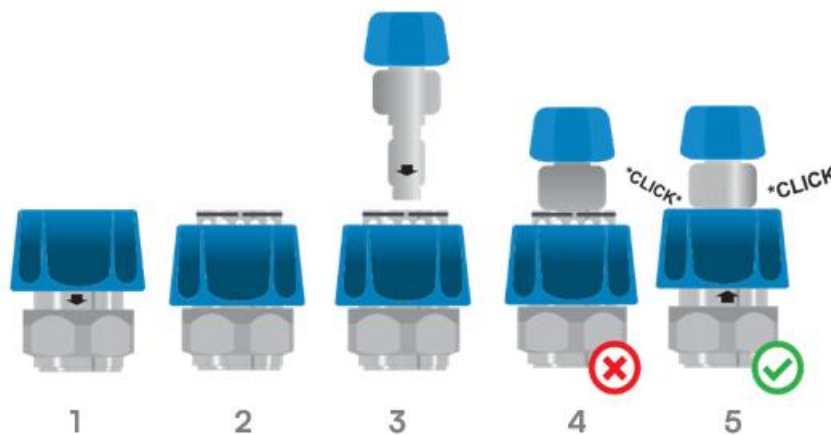
This is the Flat fan rinsing lance of length 70 mm, angle 25°, flow 30l/min, in the yellow nozzle cover protection.

- Depending on the type of nozzle (angle/flow), lances can be used to foaming, rinsing or disinfection.
- The parameters of nozzle are selected individually depending on the Industries needs and they could be different for each other.
- Lances about length of 50,70 and 90 mm are available in the version of angled 15°. Individually, there are available also angled bigger than 15°.
- Hexagonal Nozzle Protection shape prevents rolling of the lance.
- The nozzles protection are available in some colours (and for stainless steel) allow colour coding.
- Detectable nozzle cover protection is detectable by a metal detector and X-Ray.
- All colours of nozzles made by materials with antimicrobial additive.
- Antimicrobial additive reduces the possibility of growth bacteria of E. Coli and Staphylococcus aureus about 92,1%.
- For the lances of length 50, 70 and 90 mm used to handle, which is available only in colour of blue.
- The handle is used to as a protection against of the temperature of medium and falling out of the hands.
- Each type of lances is available in the SAVE WATER version.
- For the security of the lances you can use the hanger for 3, 4 or 5 lances (narrow or wide version with space for instruction),



Hexagonal Nozzle Protection shape prevents rolling of the lance. It eliminates the risk of falling from slopping surface.

ASSEMBLY INSTRUCTION FOR CONNECTING THE LANCE TO THE QUICK COUPLING



To assemble the lance to the quick coupling, follows this steps:

STEP 1 — pull the cover of the quick coupling down (Picture 1&2);

STEP 2 — insert the lance into the quick coupling and push it until you feel resistance (Picture 3);

STEP 3 — push the quick coupling cover back, then release it so it returns to its original position (Picture 5).



5).

ATTENTION! When the bearing balls are visible, **the quick coupling is not secured correctly** (Picture 4). Incorrect installation of this component may cause it to be ejected by water pressure. In case the lance has not fully been pushed in, move the quick coupling cover back to its original position until you hear a “click” (Picture

Do not replace the lance while the water flow is open!