

### DATA SHEET

Data Sheet number  
**29.23**

Revision number  
**v.2**

Revision date  
**15.07.2025**

Product code  
as listed below

### LOCKABLE ULTRA HYGIENIC® CANISTER HOLDER



MATERIAL

stainless steel



NUMBER OF PIECES IN THE PACKAGE

1

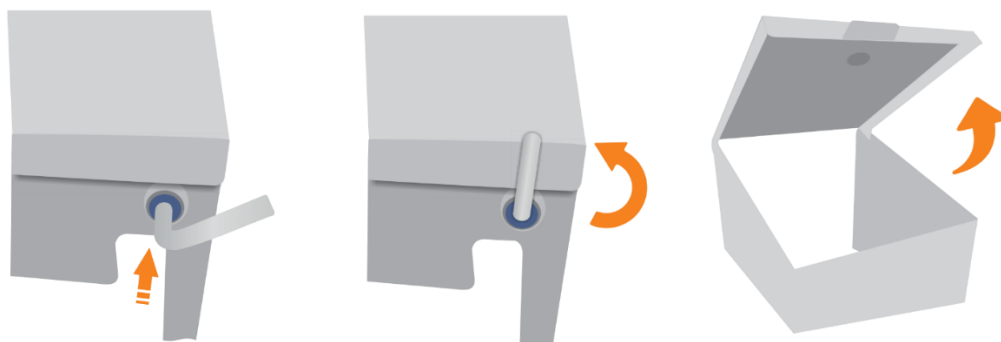




### PRODUCT VERSIONS

PRODUCT CODE	NAME/VERSION	WEIGHT	PRODUCT DIMENSIONS	PACKAGE DIMENSIONS	NUMBER OF PIECES ON THE PALLET	MOUNTING HOLES SPACING (W x H)
05.04.00.04	LOCKABLE 2 x 25L ULTRA HYGIENIC® CANISTER HOLDER	8,9kg	548 W x 496 H x 356 D mm	385 x 570 x 531 mm	12	513 x 2x172 mm
05.04.00.04.XL	LOCKABLE 2 x 25L ULTRA HYGIENIC® CANISTER HOLDER XL	10 kg	548 W x 546 H x 356 D mm	385 x 570 x 550 mm	12	513 x 2x172 mm
05.04.00.03	LOCKABLE 25L ULTRA HYGIENIC® CANISTER HOLDER	5,6 kg	280 W x 496 H x 356 D mm	300 x 520 x 380 mm	24	216 x 2x172 mm
05.04.00.03.XL	LOCKABLE 25L ULTRA HYGIENIC® CANISTER HOLDER XL	6,4 kg	280 W x 546 H x 356 D mm	300 x 550 x 380 mm	24	216 x 2x172 mm
05.04.00.10	LOCKABLE 10L ULTRA HYGIENIC® CANISTER HOLDER	5,5 kg	226 W x 381 H x 305 D mm	260 x 420 x 310 mm	24	130 x 205 mm
05.04.00.05	LOCKABLE 5L ULTRA HYGIENIC® CANISTER HOLDER	4,1kg	186 W x 382 H x 257 D mm	210 x 420 x 280 mm	24	130 x 205 mm

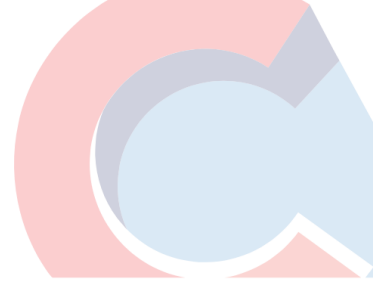
### OPENING INSTRUCTION



### MAINTENANCE

ULTRA HYGIENIC® hanger is made of stainless steel. Its anti-corrosion properties depend on the conditions in which the steel is used and its maintenance. Stainless steel products should be cleaned, dried and maintained with products intended for this purpose. Particular attention should be paid to the regime of cleaning products used in the environment of high salinity or humidity.

- It is available in a single version for 5l, 10l and 25l canisters with chemicals. XL version is dedicated to higher canisters.
- The double version is designed for two canisters of chemicals, which are separated by a partition to prevent the canisters from moving. XL version is intended to higher canisters.
- Safe lock — supervision of used chemicals
- The lock is equipped with a system: MASTER KEY SYSTEM — one key for all holders.
- The key is included in the kit.
- Hygienic design — flap mounted at an angle allow free flow of sludge
- Durable construction
- Mounting pins included
- Laser marking available on request.



### ACCESSORIES

- Stump tray;
- Hanger support for 25l and 2x25l;
- Wall reinforcements: single or double (for lockable 25l and 2x25l);
- Key.