

DATA SHEET

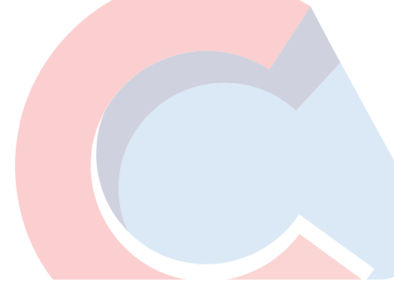
revision date
24.06.2024

product code
20.01.03.02.e

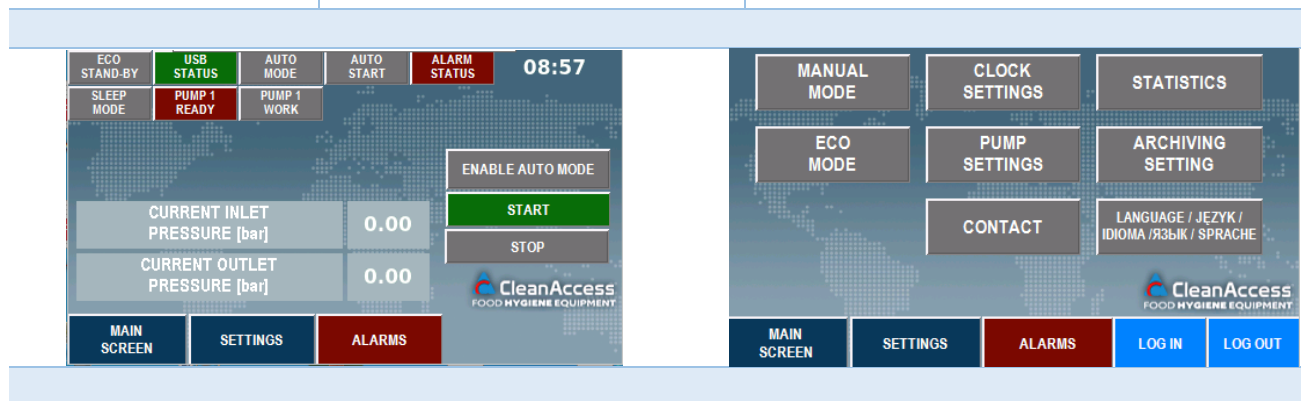
Central Point CP 400/12FSe



WEIGHT	500 kg
MAX. DIMENSIONS (WxHxD)	1200,50 x 1407 x 1198 mm
MAX. NUMBER OF USERS	12
MIN. WATER FLOW FEED	440 l/min
WATER INLET	EXT 2 ½"
WATER OUTLET	EXT 2 ½"
MAX. WORKING PRESSURE	25 bar
PRESSURE (FEED)	2-10 bar
MAX. WATER TEMPERATURE (FEED)	70° C



NOMINAL ENGINE POWER	2x7.5 kW
BASIC FREQUENCY	50/60 Hz
NOMINAL VOLTAGE	380-480 V
NUMBER OF PIECES IN THE PACKAGE	1
NUMBER OF PIECES ON THE PALLET	1



- Multi-pump set
- Equipped with a Grundfos multistage pump - one of the leading manufacturers of such solutions in the world
- It has a durable and hygienic stainless steel frame
- Equipped with dry-running protection and overheating
- It has an automatic venting system
- Equipped with an inverter, which enables flexible operation of the device and reduces energy consumption
- The housing protects against excessive wear of components
- Central Point equipped with a PLC controller with a touch screen
- Possibility of archiving device errors
- Equipped with protection against dry running and too low pressure on the unit supply
- Full reporting of media consumption
- The bonding ties used as a permanent element for fastening cables and wires is detectable by a metal detectors or X-Ray devices.

Additional options:

- Possibility to install drivers other than those provided by CleanAccess according to customer requirements
- Possibility of remote connection to a computer and data transfer
- Equipped with a flow meter and archive water consumption readings
- Equipped with energy consumption meter
- Possibility of connecting an internet modem in order to remotely connect to the device

MAINTENANCE

The non-return valve and filter should be checked at least once a month. Depending on the degree of wear, It is recommended to replace them at least once a year.

The Central Point should only be installed in locations where ambient temperature above 0°C is guaranteed. The equipment should be protected against temperatures below freezing, as this may cause water freezing in the system and its damage. If there is a known risk of temperature dropping below freezing, immediately remove all water from the system.