



DATA SHEET

Data Sheet number
15.24

Revision number
v.2

Revision date
16.07.2025

Product code

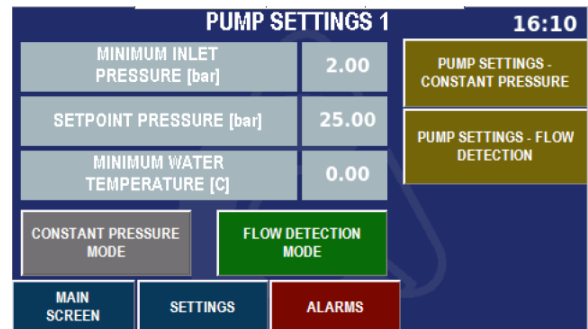
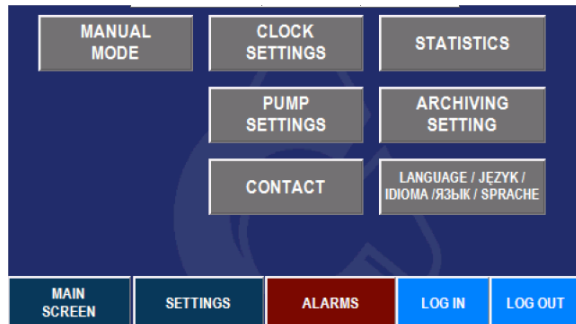
20.01.01.02

20.01.01.02.e

CENTRAL POINT CP 100/4FH



WEIGHT	Approx. 215 kg
MAX. DIMENSIONS (WxHxD)	629 x 1855 x 572 mm
MAX. NUMBER OF USERS	4
MIN. WATER FLOW FEED	120 l/min
WATER INLET	EXT 1 ½"
WATER OUTLET	EXT 1 ¼"
MAX. WORKING PRESSURE	25 bar
PRESSURE (FEED)	2-10 bar
MEDIUM TEMPERATURE RANGE	70° C
NOMINAL ENGINE POWER	5.5 kW
BASIC FREQUENCY	50 Hz
NOMINAL VOLTAGE	3 x 380-415D/660-690Y V
NUMBER OF PIECES IN THE PACKAGE	1
NUMBER OF PIECES ON THE PALLET	1



- Durable, hygienic housing that allows the device to be installed in production areas.
- Easy access to the device through the service door.
- Equipped with an inverter, which enables flexible operation of the device and reduces energy consumption.
- The housing protects against excessive wear of components.
- Central Point equipped with a PLC controller with a touch screen.
- Possibility of archiving device errors.
- Equipped with protection against dry running and too low pressure on the unit supply.
- Version with e-option is equipped with a router that allows you to use the Smart Data Access application for controlling washing process parameters.
- The bonding ties used as a permanent element for fastening cables and wires is detectable by a metal detectors or X-Ray devices.

Additional options:

- Possibility to install drivers other than those provided by CleanAccess according to customer requirements.
- Possibility of remote connection to a computer and data transfer.
- Possibility to install a flow meter and archive water consumption readings.
- Possibility of connecting an internet modem in order to remotely connect to the device.

MAINTENANCE

The non-return valve and filter should be checked at least once a month. Depending on the degree of wear, it is recommended to replace them at least once a year.

The Central Point should only be installed in locations where ambient temperature above 0°C is guaranteed. The equipment should be protected against temperatures below freezing, as this may cause water freezing in the system and its damage. If there is a known risk of temperature dropping below freezing, immediately remove all water from the system.