

DATA SHEET

Data Sheet number
18.24

Revision number
v.2

Revision date
16.07.2025

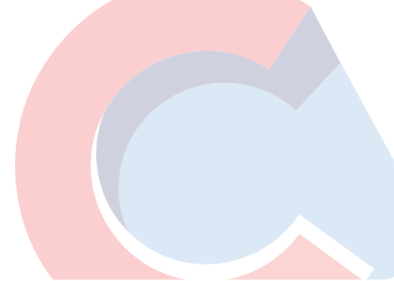
Product code

20.01.03.01.e

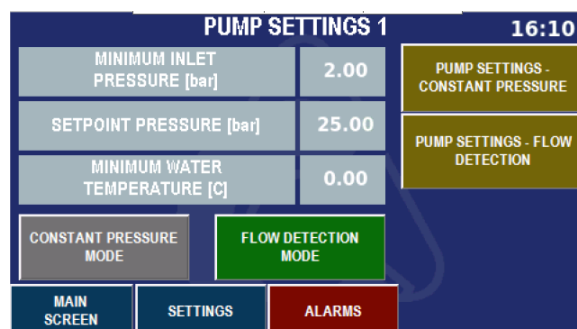
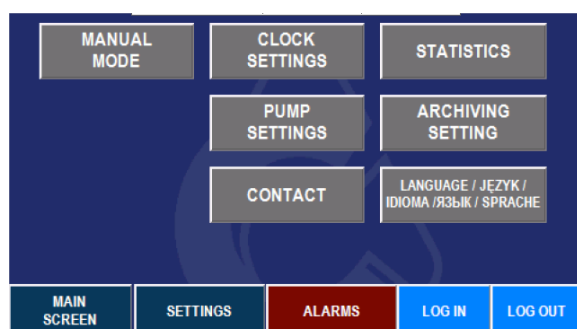
CENTRAL POINT CP 200/8FS_e



WEIGHT	260 kg
MAX. DIMENSIONS (WxHxD)	910 x 1753 x 1071 mm
MAX. NUMBER OF USERS	8
MIN. WATER FLOW FEED	240 l/min
WATER INLET	EXT 2"
WATER OUTLET	EXT 1 1/2"
MAX. WORKING PRESSURE	25 bar
PRESSURE (FEED)	2-10 bar
MAX. WATER TEMPERATURE (FEED)	70° C
NOMINAL ENGINE POWER	2x5.5 kW



BASIC FREQUENCY	50 Hz
NOMINAL VOLTAGE	3 x 380-415DV/660-690Y V
NUMBER OF PIECES IN THE PACKAGE	1
NUMBER OF PIECES ON THE PALLET	1



- Multi-pump set.
- Equipped with a Grundfos multistage pump - one of the leading manufacturers of such solutions in the world.
- It has a durable and hygienic stainless steel frame.
- Equipped with dry-running protection and overheating.
- It has a automatic venting system.
- Equipped with an inverter, which enables flexible operation of the device and reduces energy consumption.
- The housing protects against excessive wear of components.
- Central Point equipped with a PLC controller with a touch screen.
- Possibility of archiving device errors.
- Equipped with protection against dry running and too low pressure on the unit supply.
- Version with e-option is equipped with a router that allows you to use the Smart Data Access application for controlling washing process parameters.

Additional options:

- Possibility to install drivers other than those provided by CleanAccess according to customer requirements.
- Possibility of remote connection to a computer and data transfer.
- Equipped with a flow meter and archive water consumption readings.
- Equipped with energy consumption meter.
- Possibility of connecting an internet modem in order to remotely connect to the device.

MAINTENANCE

The non-return valve and filter should be checked at least once a month. Depending on the degree of wear, It is recommended to replace them at least once a year.

The Central Point should only be installed in locations where ambient temperature above 0°C is guaranteed. The equipment should be protected against temperatures below freezing, as this may cause water freezing in the system and its damage. If there is a known risk of temperature dropping below freezing, immediately remove all water from the system.