

## DATA SHEET

Data Sheet number  
**20.24**

Revision number  
**v.2**

Revision date  
**16.07.2025**

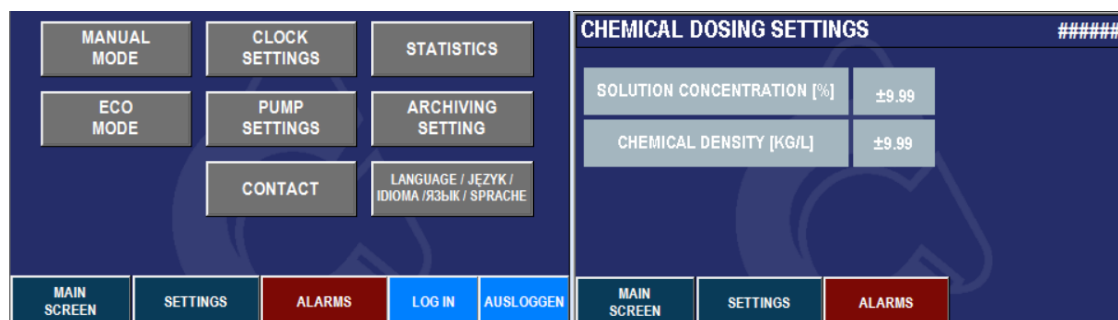
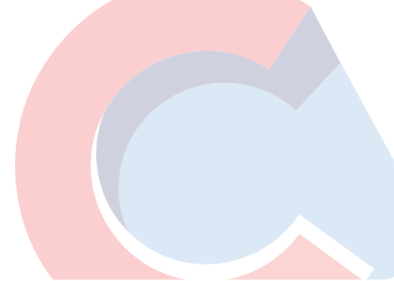
Product code

**20.03.00.05**

### CENTRAL DOSING POINT CDP 60/5FS<sub>e</sub>



WEIGHT	150 kg
MAX. DIMENSIONS (WxHxD)	845 x 1759 x 744 mm
MAX. NUMBER OF USERS	5
MIN. WATER FLOW FEED	75 l/min
WATER INLET	EXT 1 1/4"
WATER OUTLET	EXT 1 1/4"
MAX. WORKING PRESSURE	13 bar
PRESSURE (FEED)	2-10 bar
MAX. WATER TEMPERATURE (FEED)	30° C
NOMINAL ENGINE POWER	3 kW
BASIC FREQUENCY	50 Hz
NOMINAL VOLTAGE	3 x 380-415D V
NUMBER OF PIECES IN THE PACKAGE	1
NUMBER OF PIECES ON THE PALLET	1



- Multi-pump set.
- Equipped with a Grundfos pump - one of the leading manufacturers of such solutions in the world.
- Equipped with a dosing pump concentrated preoperation.
- The solution in the tank consist of proportional dosing of a concentrated chemical preparation to the incoming water.
- Equipped with dry-running protection and overheating.
- Equipped with an inverter, which enables flexible operation of the device and reduces energy consumption.
- Central Point equipped with a PLC controller with a touch screen.
- Possibility of archiving device errors.
- Equipped with protection against working on an empty tank.
- Version with e-option is equipped with a router that allows you to use the Smart Data Access application for controlling washing process parameters.

#### Additional options:

- Possibility to install drivers other than those provided by CleanAccess according to customer requirements.
- Possibility of remote connection to a computer and data transfer.
- Equipped with a flow meter and archive water consumption readings.
- Equipped with chemical flow meter and archive chemical consumption readings.
- Equipped with energy consumption meter.
- Possibility of connecting an internet modem in order to remotely connect to the device.

## MAINTENANCE

The non-return valve and filter should be checked at least once a month. Depending on the degree of wear, It is recommended to replace them at least once a year.

The Central Dosing Point should only be installed in locations where ambient temperature above 0°C is guaranteed. The equipment should be protected against temperatures below freezing, as this may cause water freezing in the system and its damage. If there is a known risk of temperature dropping below freezing, immediately remove all water from the system.