



DATA SHEET

Data Sheet number
21.23

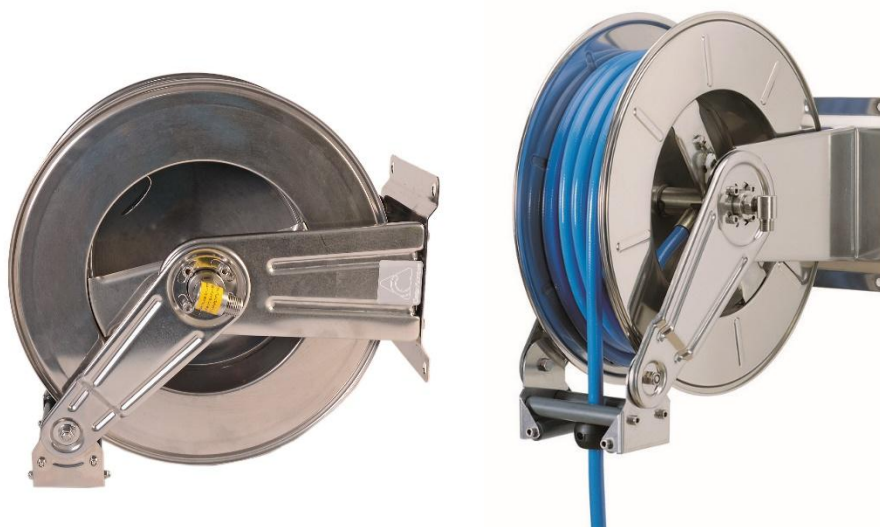
Revision number
v.2

Revision date
15.07.2025

Product code

05.01.20.12

AUTOMATIC HOSE REEL FOR 20 m ½" HOSE



MATERIAL

AISI 304- sides and roll
AISI 303- shaft and swivel joint
Carbon steel spring

WEIGHT

16,4 kg

PRODUCT DIMENSIONS (W x H x D)

570 x 430 x 220 mm (fully opened)

MOUNTING HOLES SPACING (W x H)

180 x 205 mm

THREAD INLET/OUTLET

½" EXT / ½" INT

MAX. PRESSURE LIMITED BY CONNECTION ELEMENTS

200 bar
Nie dotyczy parametrów węży

MAX. WORKING TEMPERATURE

140°C (for a short period of time only)

REEL FOR HOSE

20 m, ½"

NUMBER OF PIECES IN THE PACKAGE

1

PACKAGE DIMENSIONS (W x H x D)

280 x 600 x 550 mm

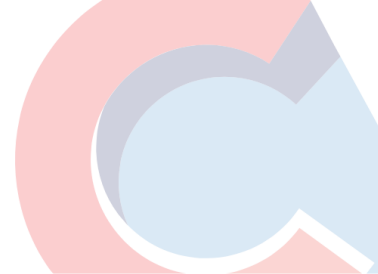
NUMBER OF PIECES ON THE PALLET

20

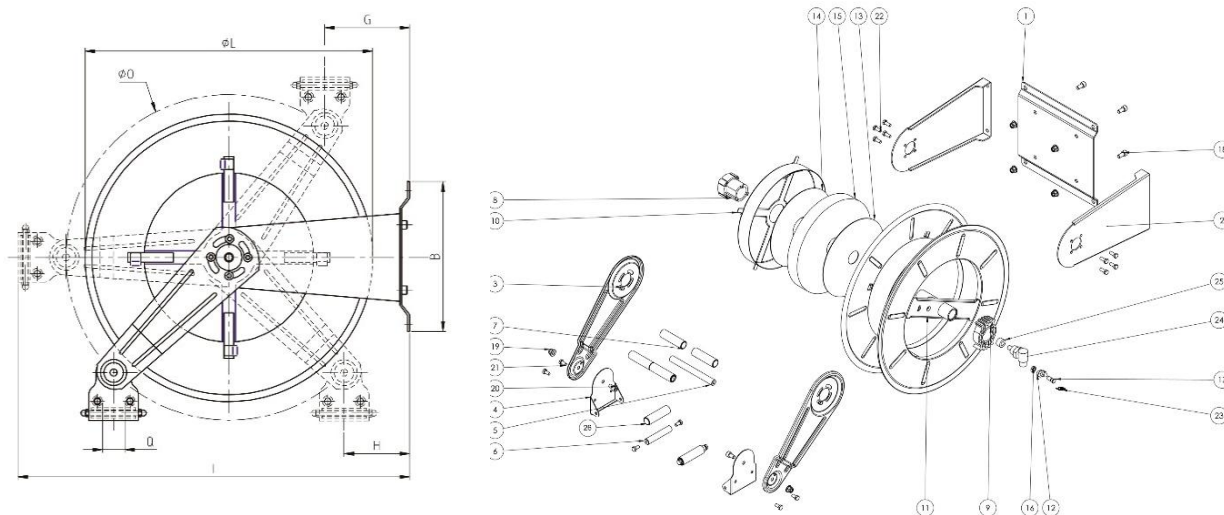


MAINTENANCE

Hose reel is made of stainless steel. Its anti-corrosion properties depend on the conditions in which the steel is used and its maintenance. Stainless steel products should be cleaned, dried and maintained with products intended for this purpose. Particular attention should be paid to the regime of cleaning products used in an environment of high salinity or humidity.



DRAWINGS



- Automatic hose reel.
- Facilitates the use of the hose and its protection against damage.
- Wound up on the reel hose eliminates trip.
- Adjustable angle of the hose reel arm.
- Laser marking available on request.
- Hygienic design.
- Solid and durable construction.

ACCESSORIES

Service parts available in the set:

- Nipple;
- hose bumper.

Most popular service parts available on request:

- spring;
- wall swivel bracket;
- angled swivel joint;
- hose reel mounting plate.

Other accessories may also be available on request.