

## DATA SHEET

Data Sheet number  
**26.23**

Revision number  
**v.2**

Revision date  
**15.07.2025**

Product code

**05.02.25.34**

### MANUAL HOSE REEL FOR 25 m $\frac{3}{4}$ " HOSE

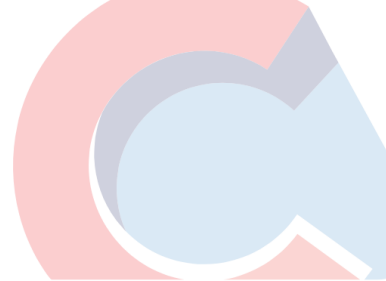


MATERIAL	AISI 304- sides and roll AISI 303- shaft and swivel joint
WEIGHT	11 kg
PRODUCT DIMENSIONS (WxHxD)	394 x 410 x 430 mm
MOUNTING HOLES SPACING (W x H)	266 x 114 mm
THREAD INLET/OUTLET	$\frac{1}{2}$ " EXT / $\frac{1}{2}$ " INT
MAX. PRESSURE LIMITED BY CONNECTION ELEMENTS	100 bar Nie dotyczy parametrów węża
MAX. WORKING TEMPERATURE	100°C (for a short period of time only)
REEL FOR HOSE	25 m, $\frac{3}{4}$ "
NUMBER OF PIECES IN THE PACKAGE	1
PACKAGE DIMENSIONS (W x H x D)	500 x 535 x 455 mm
NUMBER OF PIECES ON THE PALLET	8

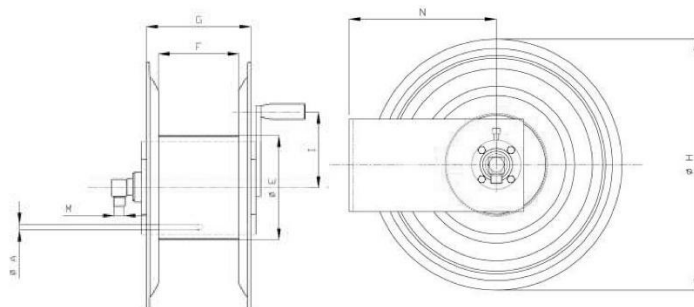


### MAINTENANCE

Hose reel is made of stainless steel. Its anti-corrosion properties depend on the conditions in which the steel is used and its maintenance. Stainless steel products should be cleaned, dried and maintained with products intended for this purpose. Particular attention should be paid to the regime of cleaning products used in an environment of high salinity or humidity.



## DRAWINGS



- Manual hose reel.
- Facilitates the use of the hose and its protection against damage.
- Wound up on the reel hose eliminates trip.
- Laser marking available on request.
- Hygienic design.
- Solid and durable construction.

## ACCESSORIES

### Service parts available in the set:

- nipple.

### Most popular service parts available on request:

- wall swivel bracket;
- angled swivel joint;
- hose reel mounting plate.

Other accessories may also be available on request.